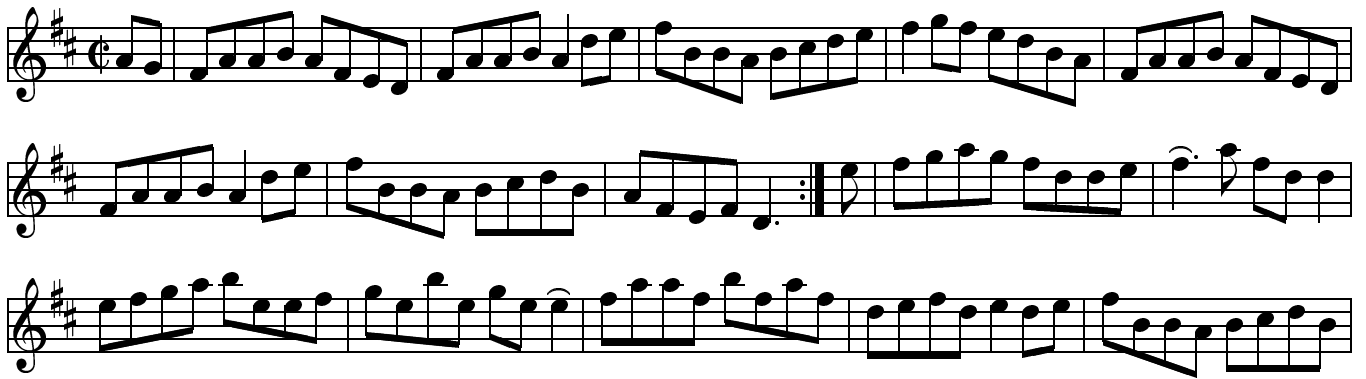


179. The Maid Behind the Bar
The Green Mountain



Variations: I 2-5



180. Miss McLeod's
Mrs. MacLeod of Raasay



181. The Merry Blacksmith



182. The Star of Munster

Musical notation for 'The Star of Munster' in G major, 2/4 time. The piece consists of four staves. The first three staves contain the main melody, with a triplet of eighth notes in the third staff. The fourth staff is labeled 'Variations: I 1, 4' and contains two measures of variation, each marked with a repeat sign.

183. Drowsy Maggie

Attributed to Walter 'Piper' Jackson

Musical notation for 'Drowsy Maggie' in G major, 2/4 time. The piece consists of four staves. The first three staves contain the main melody, with slurs under the first two notes of each measure. The fourth staff is labeled 'Variations I 1-2' and 'II 2' and contains two measures of variation, each marked with a repeat sign. A triplet of eighth notes is present in the second measure of the fourth staff.

184. Saint Anne's Reel

Musical notation for 'Saint Anne's Reel' in G major, 2/4 time. The piece consists of three staves. The first two staves contain the main melody, and the third staff contains a variation marked with a repeat sign.

185. Cooley's
Luttrell's Pass

Joe Mills

Variations: I 4

186. The Pigeon on the Gate

3

187. The Silver Spear

188. The Silver Spear (Ennis)

From S. Ennis

The musical score for "The Silver Spear" by S. Ennis is presented in ten staves. The key signature is G major (one sharp) and the time signature is 2/4. The piece begins with a treble clef and a common time signature (C), which changes to 2/4 after the first measure. The notation includes various rhythmic patterns, such as eighth and sixteenth notes, and rests. There are several first and second endings marked with "1." and "2." above the staff lines. Trills are indicated by a small triangle (^) above a note. Trills are present in the second ending of the first staff, the fourth measure of the fourth staff, and the eighth measure of the eighth staff. Triplet markings (the number 3) are used in the second measure of the third staff, the sixth measure of the fourth staff, and the first measure of the ninth staff. The score concludes with a double bar line and repeat dots.

189. The Galway Rambler
Walsh's Favorite

From P. Canny & P.J. Hayes.

Musical notation for 'The Galway Rambler' in G major, 2/4 time. It consists of three staves of music. The first staff contains the first measure, the second staff contains the second measure, and the third staff contains the third measure, which ends with a triplet of eighth notes.

Variations: I 1-2, 4-5

Musical notation for variations of 'The Galway Rambler'. It consists of a single staff of music with four measures. The first and third measures are identical to the first and third measures of the main piece, while the second and fourth measures are variations.

190. The Sally Gardens

Musical notation for 'The Sally Gardens' in G major, 2/4 time. It consists of two staves of music. The first staff contains the first measure, and the second staff contains the second measure, which ends with a triplet of eighth notes.

Variations: II 4-5

Musical notation for variations of 'The Sally Gardens'. It consists of a single staff of music with three measures. The first measure is identical to the first measure of the main piece, while the second and third measures are variations.

191. The Coal Miners' Reel

From the Suffering Gaels

Musical notation for 'The Coal Miners' Reel' in G major, 2/4 time. It consists of three staves of music. The first staff contains the first measure, the second staff contains the second measure, and the third staff contains the third measure, which ends with a triplet of eighth notes.

192. The Reel of Bogie
New Year's Night; The Style of Ballylanders

From the Kilfenora Ceili Band

Musical score for 'The Reel of Bogie' in treble clef, key of D major (two sharps), and common time. The score consists of three staves. The first staff contains the first eight measures. The second staff contains measures 9-16, with a repeat sign at the beginning of measure 9. The third staff contains measures 17-24, with a repeat sign at the end of measure 24. There are two triplet markings, each labeled with the number '3', located under the eighth notes in measures 10 and 22.

193. Ships Are Sailing

Musical score for 'Ships Are Sailing' in treble clef, key of D major (two sharps), and common time. The score consists of three staves. The first staff contains the first eight measures. The second staff contains measures 9-16, with a repeat sign at the beginning of measure 9. The third staff contains measures 17-24, with a repeat sign at the end of measure 24.

194. Sheehan's
Wellington's

Musical score for 'Sheehan's Wellington's' in treble clef, key of D major (two sharps), and common time. The score consists of three staves. The first staff contains the first eight measures. The second staff contains measures 9-16, with a repeat sign at the beginning of measure 9. The third staff contains measures 17-24, with a repeat sign at the end of measure 24. There is a triplet marking labeled with the number '3' located under the eighth notes in measure 22.

195. The Gooseberry Bush

From T. Creegan

Musical score for 'The Gooseberry Bush' in G major, 2/4 time. The score consists of four staves of music. The first staff begins with a treble clef, a key signature of one sharp (F#), and a common time signature (C). The melody is written in a single line. The second staff contains a triplet of eighth notes marked with a '3' above the notes. The third staff ends with a repeat sign and a fermata. The fourth staff continues the melody and also ends with a repeat sign and a fermata.

196. Mama's Pet Downing's

From T. Creegan

Musical score for 'Mama's Pet' in G major, 2/4 time. The score consists of three staves of music. The first staff begins with a treble clef, a key signature of one sharp (F#), and a common time signature (C). The melody is written in a single line. The second staff contains a triplet of eighth notes marked with a '3' above the notes. The third staff contains another triplet of eighth notes marked with a '3' below the notes. The piece concludes with a repeat sign and a fermata.

197. The One-Horned Cow

From L. Walsh

Musical score for 'The One-Horned Cow' in G major, 2/4 time. The score consists of three staves of music. The first staff begins with a treble clef, a key signature of one sharp (F#), and a common time signature (C). The melody is written in a single line. The second and third staves continue the melody with various rhythmic patterns and phrasing. The piece concludes with a repeat sign and a fermata.

198. Jenny's Welcome to Charlie

From R. Hannan

Musical score for 'Jenny's Welcome to Charlie' by R. Hannan. The piece is in G major and 2/4 time. It consists of five staves of music. The first staff begins with a treble clef, a key signature of one sharp (F#), and a common time signature (C). The melody is primarily eighth and sixteenth notes. The second staff features a triplet of eighth notes. The third staff contains several triplet markings. The fourth and fifth staves continue the melodic line with various triplet and eighth-note patterns. The piece concludes with a double bar line.

199. Jenny's Wedding

From L. Rowsome

Musical score for 'Jenny's Wedding' by L. Rowsome. The piece is in G major and 2/4 time. It consists of three staves of music. The first staff begins with a treble clef, a key signature of one sharp (F#), and a common time signature (C). The melody is primarily eighth and sixteenth notes. The second staff features a triplet of eighth notes. The third staff contains several triplet markings. The piece concludes with a double bar line.

200. The Cushogue The Stony Steps

From S. Ennis

Musical score for 'The Cushogue' by S. Ennis. The piece is in G major and 2/4 time. It consists of three staves of music. The first staff begins with a treble clef, a key signature of two sharps (F# and C#), and a common time signature (C). The melody is primarily eighth and sixteenth notes. The second staff features a triplet of eighth notes. The third staff contains several triplet markings. The piece concludes with a double bar line.

201. Colonel Fraser

Musical score for 'Colonel Fraser' in G major, 2/4 time. The score consists of eight staves of music. It features a variety of rhythmic patterns, including eighth and sixteenth notes, and includes several triplet markings (indicated by a '3' above the notes) and accents (indicated by a '^' above the notes).

202. The Shaskeen

From M. Carney

Musical score for 'The Shaskeen' in G major, 2/4 time. The score consists of four staves of music. It includes first and second endings, indicated by '1.' and '2.' above the notes. The piece features a mix of eighth and sixteenth notes, with several triplet markings (indicated by a '3' above the notes) and accents (indicated by a '^' above the notes).

203. The Wise Maid
Doherty's

Johnny Doherty

Musical notation for 'The Wise Maid' in treble clef, key of D major (two sharps), and common time. The piece consists of three staves. The first staff contains the first line of music. The second staff contains the second line, ending with a repeat sign and a fermata. The third staff contains the third line, ending with a fermata and a final cadence. A triplet of eighth notes is marked with a '3' below it in the third staff.

204. The Bank of Ireland

Musical notation for 'The Bank of Ireland' in treble clef, key of D major (two sharps), and common time. The piece consists of three staves. The first staff contains the first line of music. The second staff contains the second line, ending with a repeat sign and a fermata. The third staff contains the third line, ending with a fermata and a final cadence. Three triplet markings are present, each labeled with a '3' below the notes.

205. The Sligo Maid

Musical notation for 'The Sligo Maid' in treble clef, key of D major (two sharps), and common time. The piece consists of three staves. The first staff contains the first line of music, ending with a fermata. The second staff contains the second line, ending with a fermata. The third staff contains the third line, ending with a fermata and a final cadence. Two triplet markings are present, each labeled with a '3' below the notes. The text 'Variations: I 3' is written above the third staff.

206. The Piper's Despair

Musical score for 'The Piper's Despair' in G major, 2/4 time. The score consists of three staves of music. The first staff begins with a treble clef, a key signature of one sharp (F#), and a common time signature (C). The melody is written in eighth and sixteenth notes. The second and third staves continue the melody, featuring several triplet markings (indicated by a '3' below the notes) and repeat signs. The piece concludes with a double bar line.

207. Christmas Eve
Tommy Coen's

T. Coen

Musical score for 'Christmas Eve' in G major, 2/4 time. The score consists of four staves of music. The first staff begins with a treble clef, a key signature of one sharp (F#), and a common time signature (C). The melody is written in eighth and sixteenth notes. The second and third staves continue the melody, featuring several triplet markings (indicated by a '3' below the notes) and repeat signs. The fourth staff concludes the piece with a double bar line.

208. The Temperance Reel
The Teetotaller's Reel

Variations: I 1,5

Musical score for 'The Temperance Reel' in G major, 2/4 time. The score consists of three staves of music. The first staff begins with a treble clef, a key signature of one sharp (F#), and a common time signature (C). The melody is written in eighth and sixteenth notes. The second and third staves continue the melody, featuring several triplet markings (indicated by a '3' below the notes) and repeat signs. The piece concludes with a double bar line.

209. Junior Crehan's Favorite
The Knotted Cord

From L. O'Flynn

Musical score for 'The Knotted Cord' in G major, 6/8 time. It consists of three staves of music. The first staff begins with a treble clef, a key signature of one sharp (F#), and a common time signature (C). The melody features a triplet of eighth notes in the second measure. The second staff continues the melody with another triplet. The third staff concludes the piece with a final cadence.

210. The Earl's Chair

Musical score for 'The Earl's Chair' in G major, 6/8 time. It consists of four staves of music. The first staff begins with a treble clef, a key signature of one sharp (F#), and a common time signature (C). The melody is characterized by a steady eighth-note pattern. The second staff includes a triplet of eighth notes. The third staff is labeled 'Variations: I 3' and 'I 6'. The fourth staff concludes the piece with a triplet of eighth notes and a final cadence.

211. The Green Gates

Musical score for 'The Green Gates' in G major, 6/8 time. It consists of three staves of music. The first staff begins with a treble clef, a key signature of one sharp (F#), and a common time signature (C). The melody features a triplet of eighth notes in the second measure. The second staff continues the melody with another triplet. The third staff concludes the piece with a final cadence.

212. The Fermoy Lasses

Musical score for 'The Fermoy Lasses' in G major, 2/4 time. The score consists of four staves. The first three staves contain the main melody with various ornaments and triplets. The fourth staff is labeled 'Variations: I 3' and contains three measures of variation, including a measure with a dashed line indicating a rest or a specific performance instruction.

213. Toss the Feathers (D)

Musical score for 'Toss the Feathers (D)' in D major, 2/4 time. The score consists of three staves. The first two staves contain the main melody with various ornaments. The third staff contains a triplet of eighth notes.

214. Toss the Feathers (Em)
Martin Rocheford's

Musical score for 'Toss the Feathers (Em) Martin Rocheford's' in E minor, 2/4 time. The score consists of three staves. The first two staves contain the main melody with various ornaments. The third staff contains a triplet of eighth notes.

215. Father Kelly's

From P. Haverty

Musical score for 'Father Kelly's' in G major, 2/4 time. It consists of three staves. The first staff contains the main melody. The second staff contains a variation. The third staff is labeled 'Variations: II 2' and contains a variation with repeat signs.

216. The Hunter's Purse
An Sceach; The Bush

Musical score for 'The Hunter's Purse' in G major, 2/4 time. It consists of three staves. The first staff contains the main melody. The second and third staves contain variations, with a '3' indicating a triplet in each.

217. The Wind That Shakes the Barley

Musical score for 'The Wind That Shakes the Barley' in G major, 2/4 time. It consists of three staves. The first two staves contain the main melody. The third staff is labeled 'Variations: II 5' and contains a variation with a '3' indicating a triplet.

218. Rolling in the Ryegrass
The Shannon Breezes

Musical score for 'Rolling in the Ryegrass' in G major, 4/4 time. The score consists of three staves. The first staff contains the main melody. The second staff continues the melody with a fermata over the final note. The third staff contains variations, including a triplet of eighth notes. The text 'Variations: II 3, 7' is centered below the second staff.

Variations: II 3, 7

219. The Silver Spire

Musical score for 'The Silver Spire' in G major, 4/4 time. The score consists of three staves. The first staff contains the main melody. The second staff continues the melody with a fermata over the final note and a triplet of eighth notes. The third staff contains variations, including a fermata over the final note and a triplet of eighth notes. The text 'Variations: I, II 7-8' is centered below the second staff.

Variations: I, II 7-8

220. The Doon Reel

Musical score for 'The Doon Reel' in G major, 4/4 time. The score consists of three staves. The first staff contains the main melody. The second staff continues the melody with a triplet of eighth notes. The third staff contains variations, including a triplet of eighth notes. The text 'Variations: I, II 7-8' is centered below the second staff.

Variations: I, II 7-8

221. The Merry Sisters

From S. Ennis

Variations II 1,2:

222. The Red-Haired Lass Shearing the Sheep

From J. F. Vesey

223. The Dunmore Lasses The Road to Knock; Morrison's

224. The Dublin Reel
Jackson's

Variations: I 4-6

225. The Cloon Reel
The Humors of Toomagh

From M. Molloy & T. Peoples

226. Lucy Campbell

Musical score for 'Lucy Campbell' in G major (one sharp) and 2/4 time. The score consists of six staves of music. The first staff begins with a treble clef and a key signature of one sharp. The melody is characterized by eighth and sixteenth notes, with some slurs and ties. A triplet of eighth notes is marked with a '3' above it in the second staff. The piece concludes with a double bar line and repeat dots.

227. Farewell to Ireland (Am)

From T. Creggan

Musical score for 'Farewell to Ireland (Am)' in G major (one sharp) and 2/4 time. The score consists of five staves of music. The melody features a mix of eighth and sixteenth notes, often grouped in pairs or triplets. Numerous triplets are indicated with a '3' above the notes. The piece ends with a double bar line and repeat dots.

228. Farewell to Ireland (D)

Musical score for 'Farewell to Ireland (D)'. It consists of three staves of music in the key of D major (two sharps) and common time. The first staff contains the first line of the melody. The second staff contains the second line, ending with a repeat sign. The third staff contains the third line, which includes a triplet of eighth notes marked with a '3' and ends with a double bar line.

229. The Cup of Tea

Musical score for 'The Cup of Tea'. It consists of five staves of music in the key of D major (two sharps) and common time. The first staff contains the first line of the melody. The second staff contains the second line, ending with a repeat sign. The third staff contains the third line, featuring a triplet of eighth notes marked with a '3'. The fourth staff contains the fourth line, also featuring a triplet of eighth notes marked with a '3'. The fifth staff is labeled 'Variant I 3-4' and contains a single line of music with a repeat sign and a dashed line indicating a continuation or variation.

230. The Salamanca Reel

Musical score for 'The Salamanca Reel'. It consists of three staves of music in the key of D major (two sharps) and common time. The first staff contains the first line of the melody. The second staff contains the second line, ending with a repeat sign and a triplet of eighth notes marked with a '3'. The third staff is labeled 'Variations: I 1' and contains a single line of music with a repeat sign and a dashed line indicating a continuation or variation.

231. The Salamanca Reel

From *S. Ennis*

Musical score for "The Salamanca Reel" by S. Ennis. The score consists of seven staves of music in treble clef, key of D major (one sharp), and common time. The first six staves contain the main melody, which is characterized by frequent triplet patterns. The seventh staff is labeled "Variations I: 3,4" and contains a variation of the melody with some rests indicated by dashed lines.

232. The Banshee

McMahon's

James McMahon

Musical score for "The Banshee" by James McMahon. The score consists of four staves of music in treble clef, key of D major (one sharp), and common time. The first three staves contain the main melody, which includes triplet patterns and some rests. The fourth staff is labeled "Variations: I 4" and "II 3" and contains a variation of the melody with rests indicated by dashed lines.

233. The Jolly Clamdiggers
The Blackthorn Stick; The Rising Sun

Musical notation for 'The Jolly Clamdiggers' in treble clef, key of D major (two sharps), and common time. The piece consists of three staves of music. The first staff contains the first eight measures. The second staff contains measures 9-16, with a double bar line after measure 12 and a triplet of eighth notes in measure 15. The third staff contains measures 17-24, with a triplet of eighth notes in measure 21.

234. The Sunny Banks

Musical notation for 'The Sunny Banks' in treble clef, key of D major (two sharps), and common time. The piece consists of three staves of music. The first staff contains measures 1-8, with a triplet of eighth notes in measure 4. The second staff contains measures 9-16, with a triplet of eighth notes in measure 9. The third staff contains measures 17-24, with a triplet of eighth notes in measure 17.

235. The Humors of Tulla

Musical notation for 'The Humors of Tulla' in treble clef, key of D major (two sharps), and common time. The piece consists of four staves of music. The first staff contains measures 1-8, with a triplet of eighth notes in measure 6. The second staff contains measures 9-16, with a triplet of eighth notes in measure 10. The third staff contains measures 17-24, with a triplet of eighth notes in measure 17. The fourth staff contains measures 25-32, with a triplet of eighth notes in measure 25. Below the first two staves of the fourth staff, the text 'Variations: I 3' is written under the first measure and 'I 6-7' is written under the sixth measure.

236. The Flogging

Musical score for 'The Flogging' in G major, 2/4 time. The score consists of five staves of music. It features a melody with several triplet markings (indicated by a '3' above the notes) and various rhythmic patterns including eighth and sixteenth notes. The piece concludes with a double bar line.

237. The Connaught Heifers

From T. Keane

Musical score for 'The Connaught Heifers' in G major, 2/4 time. The score consists of three staves of music. It features a melody with eighth and sixteenth notes, and a consistent accompaniment pattern. The piece concludes with a double bar line.

238. Sword in Hand

The Little Pig Laments the Empty Trough; Roger Sherlock's

Musical score for 'Sword in Hand' in G major, 2/4 time. The score consists of two staves of music. It features a melody with eighth and sixteenth notes, and a consistent accompaniment pattern. The piece concludes with a double bar line.

239. Sporting Paddy
Irish Pat

Musical notation for 'Sporting Paddy' in treble clef, key of D major (one sharp), and common time. The piece consists of three staves of music. The first staff begins with a treble clef, a key signature of one sharp (F#), and a common time signature. The melody is written in a single line. The second staff continues the melody, featuring a repeat sign at the beginning of the second measure. The third staff concludes the piece with a double bar line and repeat dots.

240. Roaring Mary

Musical notation for 'Roaring Mary' in treble clef, key of D major (one sharp), and common time. The piece consists of three staves of music. The first staff begins with a treble clef, a key signature of one sharp (F#), and a common time signature. The melody is written in a single line. The second staff continues the melody, featuring a repeat sign at the beginning of the second measure. The third staff concludes the piece with a double bar line and repeat dots.

241. Boil the Breakfast Early

Musical notation for 'Boil the Breakfast Early' in treble clef, key of D major (one sharp), and common time. The piece consists of three staves of music. The first staff begins with a treble clef, a key signature of one sharp (F#), and a common time signature. The melody is written in a single line. The second staff continues the melody, featuring a repeat sign at the beginning of the second measure. The third staff concludes the piece with a double bar line and repeat dots.

242. Tom Ward's Downfall
The Holly Bush; The Purty Girl



Musical notation for Tom Ward's Downfall, consisting of three staves of music in G major and 2/4 time. The first staff begins with a repeat sign. The second staff contains a triplet of eighth notes. The third staff concludes with a repeat sign.

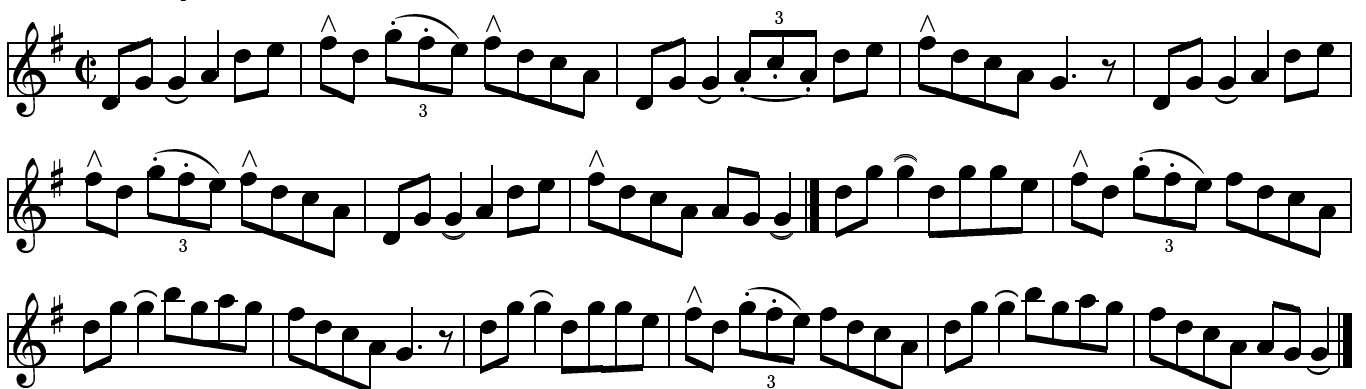
243. The Colliers' Reel



Musical notation for The Colliers' Reel, consisting of three staves of music in G major and 2/4 time. The first staff features a triplet of eighth notes. The second staff contains a repeat sign. The third staff concludes with a triplet of eighth notes and a repeat sign.

244. The Pretty Girls of Mayo
The Forge Music; Ceol na gCeartan

From J. McHugh



Musical notation for The Pretty Girls of Mayo, consisting of three staves of music in G major and 2/4 time. The first staff includes accents (^) and a triplet of eighth notes. The second staff features a triplet of eighth notes and a repeat sign. The third staff includes accents (^) and a triplet of eighth notes.

245. Miss Thornton's

Musical score for 'Miss Thornton's' in G major, 2/4 time. The piece consists of three staves of music. The first staff begins with a treble clef, a key signature of one sharp (F#), and a common time signature (C). The melody is characterized by eighth-note patterns and a final cadence. The second and third staves continue the melody with similar rhythmic patterns and conclude with a double bar line.

246. The Pinch of Snuff

From S. Ennis

Musical score for 'The Pinch of Snuff' in G major, 2/4 time. The piece consists of six staves of music. The first staff begins with a treble clef, a key signature of one sharp (F#), and a common time signature (C). The melody is highly rhythmic, featuring numerous triplet markings (indicated by a '3' above the notes) and accents (indicated by a '^' above the notes). The piece concludes with a double bar line.

247. Limestone Rock (Creegan)

Tit for Tat

From T. Creegan

Musical notation for 247. Limestone Rock (Creegan). The piece is in G major (one sharp) and 6/8 time. It consists of three staves of music. The first staff begins with a treble clef, a key signature of one sharp (F#), and a common time signature (C). The melody is written in eighth and sixteenth notes. The second staff continues the melody with a repeat sign at the end. The third staff concludes the piece with a final cadence.

248. Limestone Rock (Keane)

Tit for Tat

From T. Keane

Musical notation for 248. Limestone Rock (Keane). The piece is in G major (one sharp) and 6/8 time. It consists of three staves of music. The first staff begins with a treble clef, a key signature of one sharp (F#), and a common time signature (C). The melody is written in eighth and sixteenth notes. The second staff continues the melody with a repeat sign at the end. The third staff concludes the piece with a final cadence, featuring a triplet of eighth notes marked with a '3' above the notes.

249. The Dogs Among the Bushes

Musical notation for 249. The Dogs Among the Bushes. The piece is in G major (one sharp) and 6/8 time. It consists of three staves of music. The first staff begins with a treble clef, a key signature of one sharp (F#), and a common time signature (C). The melody is written in eighth and sixteenth notes. The second staff continues the melody with a repeat sign at the end. The third staff concludes the piece with a final cadence.

250. Kiss the Maid Behind the Barrel

From S. Ennis

Musical score for 'Kiss the Maid Behind the Barrel' in G major, 2/4 time. The score consists of five staves of music. The first staff begins with a treble clef, a key signature of one sharp (F#), and a common time signature (C). The melody is written in a single line. The second staff contains a triplet of eighth notes. The third staff contains another triplet of eighth notes. The fourth staff contains a triplet of eighth notes. The fifth staff contains a triplet of eighth notes. The piece concludes with a double bar line.

251. The Virginia Reel

From L. O'Flynn

Musical score for 'The Virginia Reel' in G major, 2/4 time. The score consists of three staves of music. The first staff begins with a treble clef, a key signature of one sharp (F#), and a common time signature (C). The melody is written in a single line. The second staff contains a triplet of eighth notes. The third staff contains another triplet of eighth notes. The piece concludes with a double bar line.

252. The Galtee Reel

From P. Mitchell

Musical score for 'The Galtee Reel' in G major, 2/4 time. The score consists of three staves of music. The first staff begins with a treble clef, a key signature of one sharp (F#), and a common time signature (C). The melody is written in a single line. The second staff contains a triplet of eighth notes. The third staff contains another triplet of eighth notes. The piece concludes with a double bar line.

253. Big Pat's
Drogheda Bay; Tie the Ribbons

From T. Keane

Musical notation for 'Big Pat's' in treble clef, key of D major (two sharps), and common time. The piece consists of three staves. The first staff contains the first line of music, ending with a first ending bracket labeled '1.'. The second staff contains the second line of music, starting with a second ending bracket labeled '2.'. The third staff contains the final line of music, which concludes the piece with a double bar line.

254. The First House in Connaught

Musical notation for 'The First House in Connaught' in treble clef, key of D major (two sharps), and common time. The piece consists of three staves. The first staff contains the first line of music, featuring a triplet of eighth notes marked with a '3'. The second staff contains the second line of music, ending with a double bar line and a repeat sign, followed by two more lines of music. The third staff contains the final line of music, which concludes with a double bar line. There are additional triplet markings (marked with '3') in the second and third staves.

255. Craig's Pipes
The Kerry Huntsman

From P. Keenan

Attributed to Joshua Campbell

Musical notation for 'Craig's Pipes' in treble clef, key of D major (two sharps), and common time. The piece consists of three staves. The first staff contains the first line of music. The second staff contains the second line of music, starting with a triplet of eighth notes marked with a '3'. The third staff contains the final line of music, which concludes with a double bar line.

256. George White's Favorite
The Carrowcastle Lasses

From the Kincora Ceili Band

Musical notation for "George White's Favorite" in G major, 2/4 time. It consists of three staves of music. The first staff begins with a treble clef, a key signature of one sharp (F#), and a common time signature (C). The melody is written in a single line. The second staff continues the melody, featuring a repeat sign with first and second endings. The third staff concludes the piece with a final cadence.

257. The Boys of Ballisodare

Musical notation for "The Boys of Ballisodare" in G major, 2/4 time. It consists of four staves of music. The first staff begins with a treble clef, a key signature of one sharp (F#), and a common time signature (C). The melody is written in a single line. The second staff continues the melody, featuring a repeat sign with first and second endings. The third staff continues the melody with various rhythmic patterns. The fourth staff concludes the piece with a final cadence.

258. The Maids of Mount Kisco

Musical notation for "The Maids of Mount Kisco" in G major, 2/4 time. It consists of four staves of music. The first staff begins with a treble clef, a key signature of one sharp (F#), and a common time signature (C). The melody is written in a single line. The second staff continues the melody, featuring a triplet of eighth notes marked with a '3' below the notes. The third staff continues the melody, also featuring a triplet of eighth notes marked with a '3' below the notes. The fourth staff concludes the piece with a final cadence.

259. The Ladies' Pantalettes
The Duke of Leinster's Wife

Musical score for 'The Ladies' Pantalettes' in G major, 3/4 time. The score consists of three staves. The first staff begins with a treble clef, a key signature of one sharp (F#), and a common time signature (C). It contains a melody with two triplet markings (indicated by a '3' below the notes). The second staff continues the melody with a repeat sign. The third staff features a more complex rhythmic pattern with many eighth notes and rests, ending with a double bar line.

260. Maude Millar
Andy McGann's

From J. Keane

Musical score for 'Maude Millar' in G major, 3/4 time. The score consists of three staves. The first staff begins with a treble clef, a key signature of one sharp (F#), and a common time signature (C). It contains a melody with a triplet marking. The second staff continues the melody with a repeat sign and another triplet marking. The third staff features a more complex rhythmic pattern with many eighth notes and rests, ending with a double bar line.

261. The Blackberry Blossom
The Strawberry Beds

Musical score for 'The Blackberry Blossom' in G major, 3/4 time. The score consists of three staves. The first staff begins with a treble clef, a key signature of one sharp (F#), and a common time signature (C). It contains a melody. The second staff continues the melody with a repeat sign. The third staff features a more complex rhythmic pattern with many eighth notes and rests, ending with a double bar line. Below the third staff, the text 'Variations: I 2,6' is written.

262. The High Reel
Sandy Duff; Duffy the Dancer

Musical score for 'The High Reel' in G major, 2/4 time. The score consists of three staves of music. The first staff contains the first two measures. The second staff contains measures 3-5, with a repeat sign at the end of measure 5. The third staff contains measures 6-8, with a repeat sign at the end of measure 8. Triplet markings (a '3' over a group of three notes) are present in measures 4, 5, 6, 7, and 8.

263. The Fox Hunter's Reel

Musical score for 'The Fox Hunter's Reel' in G major, 2/4 time. The score consists of five staves of music. The first staff contains measures 1-4. The second staff contains measures 5-8. The third staff contains measures 9-12. The fourth staff contains measures 13-16, with a triplet marking (a '3' over a group of three notes) in measure 13. The fifth staff is labeled 'Variations: I 1-3' and contains measures 17-20, with a triplet marking in measure 17. The score includes repeat signs and first/second endings.

264. The Blacksmith
The Green Garters

From C. Byrne

Musical score for 'The Blacksmith' in G major, 2/4 time. The score consists of two staves of music. The first staff contains measures 1-4. The second staff contains measures 5-8. The score includes repeat signs and first/second endings.

265. The Bucks of Oranmore

Musical score for 'The Bucks of Oranmore' in G major (one sharp) and 4/4 time. The score consists of seven staves of music. It features a variety of rhythmic patterns, including eighth and sixteenth notes, and includes several triplet markings (indicated by a '3' above the notes) and slurs. The piece concludes with a double bar line.

266. The Maid in the Cherry Tree
The Curragh Races

From T. Reck

Musical score for 'The Maid in the Cherry Tree' in G major (one sharp) and 4/4 time. The score consists of three staves of music. It features a variety of rhythmic patterns, including eighth and sixteenth notes, and includes a repeat sign with first and second endings. The piece concludes with a double bar line.

267. The New Demesne
Cottage Groves; College Groves

From T. Creegan & D. Brooks

Musical score for 'The New Demesne' in G major, 6/8 time. The score consists of six staves of music. The first staff begins with a treble clef, a key signature of one sharp (F#), and a common time signature (C). The melody is written in a single line. The second staff contains a repeat sign followed by a more complex melodic line. The third and fourth staves feature intricate sixteenth-note patterns with frequent triplets, indicated by a '3' below the notes. The fifth and sixth staves continue these patterns, ending with repeat signs and final notes.

268. The Duke of Leinster

Musical score for 'The Duke of Leinster' in G major, 6/8 time. The score consists of three staves of music. The first staff begins with a treble clef, a key signature of one sharp (F#), and a common time signature (C). The melody is written in a single line. The second staff contains a repeat sign followed by a more complex melodic line. The third staff features intricate sixteenth-note patterns with frequent triplets, indicated by a '3' below the notes, and ends with a final note and a repeat sign.

269. The Boy in the Gap
The Boys of Cappoquin

Musical score for 'The Boy in the Gap' by The Boys of Cappoquin. The score is written in treble clef with a key signature of two sharps (F# and C#) and a common time signature (C). It consists of three staves of music. The first staff contains the main melody, which is a simple, rhythmic tune. The second and third staves provide accompaniment, featuring a steady eighth-note pattern.

270. Kiss the Bride in Bed
The Kilfrush Reel

From T. Reck

Musical score for 'Kiss the Bride in Bed' by The Kilfrush Reel. The score is written in treble clef with a key signature of two sharps (F# and C#) and a common time signature (C). It consists of three staves of music. The first staff contains the main melody. The second and third staves provide accompaniment. There are triplets marked with a '3' in the second and third staves.

271. A Trip to Durrow

From T. Reck

Musical score for 'A Trip to Durrow'. The score is written in treble clef with a key signature of two sharps (F# and C#) and a common time signature (C). It consists of four staves of music. The first staff contains the main melody. The second, third, and fourth staves provide accompaniment, featuring a steady eighth-note pattern.

272. The Heather Breeze

From L. Rowsome

Musical notation for 'The Heather Breeze' in G major, 2/4 time. It consists of three staves of music. The first staff contains the first eight measures. The second staff contains measures 9-16, with a repeat sign at the end. The third staff contains measures 17-24, ending with a triplet of eighth notes.

Variations: I 1-3

Musical notation for Variations I 1-3 of 'The Heather Breeze'. It consists of a single staff of music with a repeat sign at the beginning and end, containing measures 25-32.

273. Touch Me if You Dare

From L. Rowsome

Musical notation for 'Touch Me if You Dare' in G major, 2/4 time. It consists of three staves of music. The first staff contains measures 1-8 with a triplet of eighth notes. The second staff contains measures 9-16 with triplets of eighth notes. The third staff contains measures 17-24 with triplets of eighth notes.

274. The Morning Star

From P. Keenan

Musical notation for 'The Morning Star' in G major, 6/8 time. It consists of three staves of music. The first staff contains measures 1-8 with triplets of eighth notes. The second staff contains measures 9-16 with triplets of eighth notes. The third staff contains measures 17-24 with triplets of eighth notes.

275. The Floating Crowbar

From T. Creegan

Musical score for "The Floating Crowbar" by T. Creegan. The score is written in G major (one sharp) and 6/8 time. It consists of three staves. The first staff contains the main melody. The second and third staves provide accompaniment. A triplet of eighth notes is indicated in the third staff.

276. Miss Ramsay

From T. Keane

Musical score for "Miss Ramsay" by T. Keane. The score is written in G major (one sharp) and 6/8 time. It consists of three staves. The first staff contains the main melody. The second and third staves provide accompaniment.

277. Johnny Henry's

From P. MacMathuna

Musical score for "Johnny Henry's" by P. MacMathuna. The score is written in G major (one sharp) and 6/8 time. It consists of three staves. The first staff contains the main melody. The second and third staves provide accompaniment.

278. Trim the Velvet

From P. White

Musical score for 'Trim the Velvet' in G major and 6/8 time. The score consists of five staves of music. The first staff begins with a treble clef, a key signature of one sharp (F#), and a 6/8 time signature. The melody is characterized by eighth and sixteenth notes, with some rests. The second staff continues the melody, featuring a repeat sign. The third and fourth staves show more complex rhythmic patterns with many sixteenth notes. The fifth staff concludes the piece with a final cadence.

279. Mulhaire's

From M. Nolan

Musical score for 'Mulhaire's' in G major and C-cut time. The score consists of three staves of music. The first staff begins with a treble clef, a key signature of one sharp (F#), and a C-cut time signature. The melody is primarily composed of eighth notes. The second staff continues the melody, including a repeat sign. The third staff features a more intricate melodic line with many sixteenth notes and concludes with a double bar line.

280. The Sandymount Reel

From the Ballinakill Ceili Band

Musical score for 'The Sandymount Reel' in G major and C-cut time. The score consists of three staves of music. The first staff begins with a treble clef, a key signature of one sharp (F#), and a C-cut time signature. The melody is primarily composed of eighth notes. The second staff continues the melody, including a repeat sign. The third staff features a more intricate melodic line with many sixteenth notes and concludes with a double bar line.

281. Mayor Harrison's Fedora

Musical score for 'Mayor Harrison's Fedora' in G major, 2/4 time. The score consists of four staves of music. The first staff begins with a treble clef, a key signature of one sharp (F#), and a common time signature (C). The melody is primarily eighth and sixteenth notes. The second staff features a triplet of eighth notes marked with a '3' below. The third staff also contains a triplet of eighth notes marked with a '3' below. The fourth staff concludes the piece with a double bar line and repeat dots.

282. Mayor Harrison's Fedora (O'Flynn)

From *L. O'Flynn*

Musical score for 'Mayor Harrison's Fedora (O'Flynn)' in G major, 2/4 time. The score consists of four staves of music. The first staff begins with a treble clef, a key signature of one sharp (F#), and a common time signature (C). The melody includes a triplet of eighth notes marked with a '3' below. The second staff features two first endings, labeled '1.' and '2.', with repeat signs. The third staff contains two triplet markings, each with a '3' below. The fourth staff concludes the piece with a double bar line and repeat dots.

283. The Beauty Spot

Johnny Gorman's; The Back of the Change

From *T. Denman & B. Dennehy*

Musical score for 'The Beauty Spot' in G major, 2/4 time. The score consists of three staves of music. The first staff begins with a treble clef, a key signature of one sharp (F#), and a common time signature (C). The melody is primarily eighth and sixteenth notes. The second staff features three triplet markings, each with a '3' below. The third staff includes a variant section labeled 'Variant: I 7' and concludes with a double bar line and repeat dots.

284. Beauty Spot (Delaney)

Colonel Taylor

From B. Delaney

Musical score for 'Beauty Spot' in G major, 2/4 time. The score consists of four staves. The first two staves feature a melody with frequent triplet markings. The third and fourth staves provide a harmonic accompaniment with a steady eighth-note bass line and a treble line of chords and moving lines. The piece concludes with a double bar line and a key signature change to G# major.

285. The Queen of the May

From P. MacMathuna

Musical score for 'The Queen of the May' in G major, 2/4 time. The score consists of three staves. The melody is characterized by a rhythmic pattern of eighth and sixteenth notes. The accompaniment features a consistent eighth-note bass line and a treble line with chords and moving lines. A triplet marking is present in the third staff.

286. The Milliner's Daughter

Upstairs in a Tent; Gardner's Daughter

From P. MacMathuna

Musical score for 'The Milliner's Daughter' in G major, 2/4 time. The score consists of four staves. The melody is a lively piece with a mix of eighth and sixteenth notes. The accompaniment includes a steady eighth-note bass line and a treble line with chords and moving lines. The piece features several triplet markings and an accent (^) over a note in the final staff.

287. The Stone in the Field

From L. Rowsome

Musical score for 'The Stone in the Field' by L. Rowsome. The piece is in G major and 3/4 time. It features a melody with frequent triplets and slurs. The score is presented in three staves.

288. The First Month of Summer

From P. MacMathuna

Musical score for 'The First Month of Summer' by P. MacMathuna. The piece is in G major and 3/4 time. It features a melody with frequent slurs and eighth-note patterns. The score is presented in three staves.

289. The Village Green
The First Month of Summer

From M. Carney

Musical score for 'The Village Green' by M. Carney. The piece is in G major and 3/4 time. It features a melody with frequent slurs and eighth-note patterns. The score is presented in four staves, including first and second endings and triplets.

290. The Boy in the Boat

From L. Rowsome

Musical score for 'The Boy in the Boat' in G major, 2/4 time. The score consists of three staves. The first staff contains the first eight measures. The second staff contains measures 9-16, with a repeat sign at the beginning and a fermata over the final measure. The third staff contains measures 17-24, also with a repeat sign at the end. Triplet markings (3) are present above measures 10, 11, 12, 13, 14, 15, 16, 17, 18, 19, 20, 21, 22, 23, and 24.

291. Stay For Another While
Fair-Haired Girl

From R. Hannan

Musical score for 'Stay For Another While' in G major, 2/4 time. The score consists of three staves. The first staff contains the first eight measures. The second staff contains measures 9-16, with a repeat sign at the beginning and a fermata over the final measure. The third staff contains measures 17-24, also with a repeat sign at the end. Triplet markings (3) are present above measures 10, 11, 12, 13, 14, 15, 16, 17, 18, 19, 20, 21, 22, 23, and 24.

292. The Boys of Ballinahinch
The Strawberry Blossom; Mullin's Fancy

Musical score for 'The Boys of Ballinahinch' in G major, 2/4 time. The score consists of three staves. The first staff contains the first eight measures. The second staff contains measures 9-16, with a repeat sign at the beginning and a fermata over the final measure. The third staff contains measures 17-24, also with a repeat sign at the end. Triplet markings (3) are present above measures 10, 11, 12, 13, 14, 15, 16, 17, 18, 19, 20, 21, 22, 23, and 24.

293. Lord MacDonald's Reel

From L. Rowsome

Musical score for "Lord MacDonald's Reel" in G major and 2/4 time. The score consists of six staves of music. It features a variety of rhythmic patterns, including eighth and sixteenth notes, and includes several triplet markings (indicated by a '3' above the notes) and a fermata. The piece concludes with a double bar line.

294. The Boyne Hunt

Musical score for "The Boyne Hunt" in G major and 2/4 time. The score consists of three staves of music. It features a variety of rhythmic patterns, including eighth and sixteenth notes, and includes several triplet markings (indicated by a '3' above the notes). The piece concludes with a double bar line.

295. Patsy Tuohey's

From P. Mitchell

Musical score for 'Patsy Tuohey's' in G major, 6/8 time. The score consists of three staves. The first staff begins with a treble clef, a key signature of one sharp (F#), and a common time signature. The melody features eighth and sixteenth notes, with a first ending bracketed over the final measure. The second staff continues the melody with a second ending bracketed over the final measure. The third staff contains a triplet of eighth notes and a final triplet of eighth notes. The piece concludes with a double bar line.

296. The Pure Drop Hand Me Down the Tackle; Tom Steele

From S. Ennis

Musical score for 'The Pure Drop' in G major, 6/8 time. The score consists of four staves. The first staff begins with a treble clef, a key signature of one sharp (F#), and a common time signature. The melody features eighth and sixteenth notes. The second staff contains two first endings, each bracketed over the final measure. The third staff continues the melody with eighth and sixteenth notes. The fourth staff is labeled 'Variations I 1,3, & 5:' and 'II 5' and features a triplet of eighth notes. The piece concludes with a double bar line.

297. The Flax in Bloom

From S. Ennis

Musical score for 'The Flax in Bloom' in G major, 6/8 time. The score consists of three staves. The first staff begins with a treble clef, a key signature of one sharp (F#), and a common time signature. The melody features eighth and sixteenth notes, with several triplet markings. The second staff continues the melody with eighth and sixteenth notes. The third staff contains a triplet of eighth notes and concludes with a double bar line.

298. The Flax in Bloom #2

From S. Ennis

Musical score for 'The Flax in Bloom #2' by S. Ennis. The score consists of five staves of music in G major and 6/8 time. It features various rhythmic patterns, including triplets and sixteenth-note runs. The first staff has a triplet of eighth notes. The second staff has first and second endings. The third staff continues the melodic line. The fourth staff has another triplet. The fifth staff concludes with a triplet of eighth notes.

299. Sean Reid's
The West Wind; Gilbert Clancy's

From P. Carty

Musical score for 'The West Wind; Gilbert Clancy's' by Sean Reid. The score consists of three staves of music in G major and 6/8 time. The first staff is a simple melody. The second staff has a triplet of eighth notes. The third staff has a triplet of eighth notes and ends with a double bar line and repeat sign.

Variants: II 2

300. The Rainy Day

From P. Keenan

Musical score for 'The Rainy Day' by P. Keenan. The score consists of three staves of music in G major and 6/8 time. The first staff has a melody with an accent mark. The second staff has a triplet of eighth notes. The third staff has a triplet of eighth notes.

301. The Crooked Road to Dublin

Musical notation for 'The Crooked Road to Dublin' in G major, 6/8 time. It consists of three staves of music. The first staff begins with a treble clef, a key signature of one sharp (F#), and a common time signature (C). The melody is written in eighth and sixteenth notes, featuring a prominent triplet of eighth notes in the second measure. The piece concludes with a double bar line.

302. The Wild Irishman

From P. Keenan

Musical notation for 'The Wild Irishman' in G major, 6/8 time. It consists of three staves of music. The first staff features several triplet markings (indicated by a '3' below the notes) over eighth notes. The melody is characterized by a mix of eighth and sixteenth notes. The piece ends with a double bar line.

303. Tim Maloney's

From the Tulla Ceili Band

Musical notation for 'Tim Maloney's' in G major, 6/8 time. It consists of three staves of music. The melody is primarily composed of eighth and sixteenth notes. The piece concludes with a double bar line.

Variations: I 2

I 3-4

I, II 8

Musical notation for variations of 'Tim Maloney's' in G major, 6/8 time. It consists of a single staff of music. The first variation (I 2) is marked with a '2' below the notes. The second variation (I 3-4) is marked with '3-4' below the notes. The third variation (I, II 8) is marked with '8' below the notes. The piece concludes with a double bar line.

304. The Drunken Landlady

Musical score for 'The Drunken Landlady' in G major and 6/8 time. The score consists of three staves of music. The first staff contains the first six measures. The second staff contains measures 7-12, with a repeat sign at the end of measure 11. The third staff contains measures 13-18, also ending with a repeat sign at the end of measure 18.

305. The Monaghan Twig
Little Kate Kearney

From T. Creegan

Musical score for 'The Monaghan Twig' in G major and 6/8 time. The score consists of three staves of music. The first staff contains the first six measures. The second staff contains measures 7-12, with a repeat sign at the end of measure 11. The third staff contains measures 13-18, with a repeat sign at the end of measure 18. The score includes several triplet markings (indicated by a '3' below the notes) and a fermata over the final note of the piece.

306. Miss McGuinness

Musical score for 'Miss McGuinness' in G major and 6/8 time. The score consists of three staves of music. The first staff contains the first six measures. The second staff contains measures 7-12, with a repeat sign at the end of measure 11. The third staff contains measures 13-18, with a repeat sign at the end of measure 18. The score includes several triplet markings (indicated by a '3' below the notes) and a fermata over the final note of the piece.

307. My Love is in America

From M. O'Brien

Musical score for 'My Love is in America' in G major, 2/4 time. The score consists of four staves of music. The melody is characterized by eighth-note patterns and includes several triplet markings (indicated by a '3' above the notes).

308. The Concertina Reel

Musical score for 'The Concertina Reel' in G major, 2/4 time. The score consists of three staves of music. The melody is primarily composed of eighth-note runs and includes repeat signs with first and second endings.

309. Within a Mile of Dublin

From M. O'Brien

Musical score for 'Within a Mile of Dublin' in G major, 2/4 time. The score consists of three staves of music. The melody features eighth-note patterns and includes several triplet markings (indicated by a '3' above the notes).

310. The Lady on the Island

From the Kilfenora Ceili Band

Musical score for 'The Lady on the Island' in G major, 6/8 time. It consists of three staves of music. The first two staves contain the main melody, and the third staff contains variations. The variations are marked 'Variations: II 1,4' and include repeat signs.

311. McDermott's Josie McDermott's; The Pile of Bricks

From the Kilfenora Ceili Band

Musical score for 'McDermott's' in G major, 6/8 time. It consists of four staves of music. The first two staves contain the main melody, and the last two staves contain variations. The variations are marked 'Variations: II 1,4' and include repeat signs.

312. Primrose Lass

From F. Doran

Musical score for 'Primrose Lass' in G major, 6/8 time. It consists of four staves of music. The first three staves contain the main melody, and the fourth staff contains variations. The variations are marked 'Variations: II 1,4' and include repeat signs. The score features several triplet markings (indicated by a '3' above the notes).

313. The Old Torn Petticoat

From L. O'Flynn

Musical score for 'The Old Torn Petticoat' in G major, 6/8 time. The score consists of five staves of music. The first four staves contain the main melody, which features several triplet markings (indicated by a '3' above the notes). The fifth staff continues the melody with more triplet markings. The piece concludes with a double bar line.

314. The Flags of Dublin

From G. Fahy

Musical score for 'The Flags of Dublin' in G major, 6/8 time. The score consists of three staves of music. The melody is characterized by a steady eighth-note rhythm. The piece concludes with a double bar line.

315. Paddy Killoran's The Master's Return

From M. Guillox

Musical score for 'Paddy Killoran's The Master's Return' in G major, 6/8 time. The score consists of three staves of music. The melody features several triplet markings (indicated by a '3' above the notes). The piece concludes with a double bar line.

316. Down the Broom

Musical score for 'Down the Broom' in G major, 2/4 time. The score consists of three staves. The first staff contains the main melody with two triplet markings (indicated by a '3' below the notes). The second and third staves provide accompaniment with a consistent eighth-note rhythmic pattern.

317. Come West Along the Road

Musical score for 'Come West Along the Road' in G major, 2/4 time. The score consists of three staves. The first staff contains the main melody. The second and third staves provide accompaniment with a consistent eighth-note rhythmic pattern.

318. Russell's Reel
The Castle

From the Tulla Ceili Band

Musical score for 'Russell's Reel' in G major, 2/4 time. The score consists of three staves. The first staff contains the main melody with a triplet marking. The second and third staves provide accompaniment with a consistent eighth-note rhythmic pattern and include triplet markings.

319. Farewell to Connaught

From M. O'Brien

Musical score for 'Farewell to Connaught' in G major, 2/4 time. The score consists of four staves. The first three staves contain the main melody with various triplet and eighth-note patterns. The fourth staff is labeled 'Variations: II 5,6' and includes first and second endings, a repeat sign, and a final triplet ending.

320. The Ravelled Hank of Yarn

Musical score for 'The Ravelled Hank of Yarn' in G major, 2/4 time. The score consists of three staves. The melody is characterized by a steady eighth-note accompaniment and a main melody of eighth and sixteenth notes. Triplet markings are present throughout the piece.

321. The Swallows Tail

Musical score for 'The Swallows Tail' in G major, 2/4 time. The score consists of four staves. The first three staves feature a complex melody with many triplets and sixteenth-note runs. The fourth staff is labeled 'Variations: I 1, 4 I 1, 4 I 2, 5 I, II 7' and includes first and second endings, a repeat sign, and a final triplet ending.

322. The Five Mile Chase
The Four Hand Reel

Musical score for 'The Five Mile Chase' in G major, 2/4 time. It consists of three staves of music. The first staff begins with a treble clef and a key signature of one sharp (F#). The melody is written in a single line. The second and third staves continue the melody, with some notes beamed together and some rests. The piece ends with a double bar line.

323. The Copper Plate

Musical score for 'The Copper Plate' in G major, 2/4 time. It consists of three staves of music. The first staff begins with a treble clef and a key signature of one sharp (F#). The melody is written in a single line. The second and third staves continue the melody, featuring first and second endings marked with '1.' and '2.' above the notes. The piece ends with a double bar line.

324. The Old Copper Plate

From P. Haverty

Musical score for 'The Old Copper Plate' in G major, 2/4 time. It consists of three staves of music. The first staff begins with a treble clef and a key signature of one sharp (F#). The melody is written in a single line. The second and third staves continue the melody, featuring a triplet of eighth notes marked with a '3' below the notes. The piece ends with a double bar line.

325. The Ivy Leaf

From J. McHugh

Musical score for 'The Ivy Leaf' in G major, 3/4 time. The piece consists of three staves of music. The first staff contains the first four measures, each starting with a triplet of eighth notes. The second staff contains measures 5-8, with a repeat sign after measure 6. The third staff contains measures 9-12, ending with a double bar line. The key signature has one sharp (F#) and the time signature is 3/4.

326. The Woman of the House The Four Hand Reel

Musical score for 'The Woman of the House' in G major, 3/4 time. The piece consists of three staves of music. The first staff contains measures 1-4, with a triplet of eighth notes in measure 3. The second staff contains measures 5-8, with a repeat sign after measure 6. The third staff contains measures 9-12, ending with a double bar line. The key signature has one sharp (F#) and the time signature is 3/4.

327. The Congress Reel

Musical score for 'The Congress Reel' in G major, 3/4 time. The piece consists of three staves of music. The first staff contains measures 1-4, with triplets of eighth notes in measures 1, 3, and 4. The second staff contains measures 5-8, with a repeat sign after measure 6. The third staff contains measures 9-12, ending with a double bar line. The key signature has one sharp (F#) and the time signature is 3/4.

328. Eileen Curran
The Sailor's Return

From P. Carty

329. The Sack of Potatoes
The Sligo Dandy; The Bag of Spuds

From the Ballinakill Ceili Band

330. The Green Groves of Erin

From L. O'Flynn

331. The Scholar

Musical score for 'The Scholar' in G major, 7/8 time. The piece consists of three staves of music. The first staff begins with a treble clef, a key signature of one sharp (F#), and a 7/8 time signature. The melody is characterized by eighth and sixteenth notes, with some triplet-like groupings. The second staff continues the melody, featuring a repeat sign and a fermata over a note. The third staff concludes the piece with a final cadence and a repeat sign.

332. The Scholar (Reck)

From T. Reck

Musical score for 'The Scholar (Reck)' in G major, 7/8 time. The piece consists of seven staves of music. The first staff begins with a treble clef, a key signature of one sharp (F#), and a 7/8 time signature. The melody is characterized by eighth and sixteenth notes, with some triplet-like groupings. The second staff features a first ending (1.) and a second ending (2.) with a fermata. The third staff includes a triplet of eighth notes. The fourth staff continues the melody. The fifth staff includes a triplet of eighth notes. The sixth staff includes a triplet of eighth notes. The seventh staff features a first ending (1.) and a second ending (2.) with a fermata.

333. The Holly Bush

From D. McCort

Musical notation for 'The Holly Bush' in G major, 6/8 time. The piece consists of three staves of music. The first staff begins with a treble clef, a key signature of one sharp (F#), and a 6/8 time signature. The melody is written in a single line. The second staff continues the melody, featuring a repeat sign with first and second endings. The third staff concludes the piece with a final double bar line.

334. Crosses of Annagh Bobby Casey's

Musical notation for 'Crosses of Annagh' in G major, C time. The piece consists of three staves of music. The first staff begins with a treble clef, a key signature of one sharp (F#), and a common time signature. The melody is written in a single line. The second staff continues the melody, featuring a repeat sign with first and second endings. The third staff concludes the piece with a final double bar line.

335. Miss Johnson's

From S. Ennis

Musical notation for 'Miss Johnson's' in G major, C time. The piece consists of three staves of music. The first staff begins with a treble clef, a key signature of one sharp (F#), and a common time signature. The melody is written in a single line. The second staff continues the melody, featuring a repeat sign with first and second endings. The third staff concludes the piece with a final double bar line.

336. The West Wind

From W. Clancy

Musical score for 'The West Wind' by W. Clancy. The score is written in G major and 6/8 time. It consists of four staves of music. The melody is characterized by frequent triplet patterns, indicated by a '3' below the notes. The piece concludes with a double bar line.

337. The Old Bush

From Paddy Keenan

as played by P. Keenan

Musical score for 'The Old Bush' by Paddy Keenan. The score is written in G major and 6/8 time. It consists of four staves of music. The melody features several triplet patterns. The fourth staff includes variant markings: "Variants: I 1:", "I 5:", "I 1:", and "II 1:". The piece concludes with a double bar line.

338. Paddy Kelly's

From P. Carty

Musical score for 'Paddy Kelly's' by P. Carty. The score is written in G major and 6/8 time. It consists of three staves of music. The melody is a simple, rhythmic tune that concludes with a double bar line.

339. Jenny Picking Cockles

Musical score for 'Jenny Picking Cockles' in G major and 2/4 time. The score consists of four staves. The first three staves contain the main melody, featuring several triplet markings (indicated by a '3' above the notes). The fourth staff is labeled 'Variations: I 1, 2' and contains two alternative melodic lines, each also featuring triplet markings.

340. The Thrush in the Morning

From R. Browne & P. O'Loughlin

James Ennis

Musical score for 'The Thrush in the Morning' in G major and 2/4 time. The score consists of six staves. The first five staves contain the main melody, which is characterized by a continuous eighth-note pattern and includes several triplet markings. The sixth staff provides an alternative ending for the piece, also featuring triplet markings.

341. The Spike Island Lasses

From J. McHugh

Musical score for 'The Spike Island Lasses' in G major, 6/8 time. The score consists of six staves of music. The first staff begins with a treble clef, a key signature of one sharp (F#), and a common time signature (C). The melody is written in a single line. The second staff contains a triplet of eighth notes marked with a '3'. The third staff contains another triplet of eighth notes marked with a '3' and an accent (^) over the final note. The fourth staff contains a triplet of eighth notes marked with a '7'. The fifth and sixth staves continue the melody with various rhythmic patterns and accents.

342. Johnny's Wedding Colonel McBain

From the Gardiner Trio

Musical score for 'Johnny's Wedding' in G major, 6/8 time. The score consists of four staves of music. The first staff begins with a treble clef, a key signature of one sharp (F#), and a common time signature (C). The melody is written in a single line. The second staff contains a repeat sign. The third staff contains a triplet of eighth notes marked with a '7'. The fourth staff is divided into two sections: 'Variations: I 1-2' and 'I 5-6', each with a repeat sign.

343. Kitty's Gone a' Milking

Musical score for 'Kitty's Gone a' Milking' in G major, 2/4 time. The score consists of three staves. The first staff is the melody, starting with a repeat sign. The second and third staves provide accompaniment with chords and eighth-note patterns.

344. The Steam Packet
The Mountain Lark

Musical score for 'The Steam Packet' and 'The Mountain Lark' in G major, 2/4 time. The score consists of three staves. The first staff is the melody, featuring a triplet of eighth notes. The second and third staves provide accompaniment with chords and eighth-note patterns.

345. Rakish Paddy

Musical score for 'Rakish Paddy' in G major, 2/4 time. The score consists of four staves. The first staff is the melody. The second staff includes first and second endings. The third and fourth staves provide accompaniment. The fourth staff includes variations: 'Variations: I 3', 'I 7', and 'II 3', with a triplet of eighth notes.

346. Rakish Paddy (Johnny Doran)

From J. Doran

Musical score for 'Rakish Paddy' by Johnny Doran, featuring six staves of treble clef notation with a key signature of one sharp (F#) and a common time signature (C). The piece includes several triplet markings (indicated by a '3' above the notes) and various melodic ornaments such as slurs and ties. The music concludes with a double bar line and repeat dots.

347. Maude Miller

From B. Koehler & J. O'Sullivan

Musical score for 'Maude Miller' by B. Koehler & J. O'Sullivan, featuring three staves of treble clef notation with a key signature of one sharp (F#) and a common time signature (C). The piece includes several triplet markings (indicated by a '3' above the notes) and various melodic ornaments such as slurs and ties. The music concludes with a double bar line and repeat dots.

348. The Ash Plant (Em)

Musical score for 'The Ash Plant (Em)'. It consists of three staves of music in the key of E minor (one sharp) and common time. The melody is written in a treble clef. The first staff contains the first line of the melody. The second staff contains the second line, including a repeat sign and a triplet of eighth notes. The third staff contains the third line, also including a triplet of eighth notes.

349. The Ash Plant (D)

From B. Koehler

Musical score for 'The Ash Plant (D)'. It consists of three staves of music in the key of D major (two sharps) and common time. The melody is written in a treble clef. The first staff contains the first line of the melody. The second staff contains the second line, including a repeat sign and a triplet of eighth notes. The third staff contains the third line, also including a triplet of eighth notes.

350. Molly From Longford

From J. O'Sullivan

Musical score for 'Molly From Longford'. It consists of four staves of music in the key of D major (two sharps) and common time. The melody is written in a treble clef. The first staff contains the first line of the melody. The second staff contains the second line, including a repeat sign and a triplet of eighth notes. The third staff contains the third line, including a triplet of eighth notes and a fermata. The fourth staff contains the fourth line, including a triplet of eighth notes and a fermata. The text 'Variations: I 1-2' is written below the third staff.

351. The Four Courts

From J. Shannon

Musical score for 'The Four Courts' in G major, 2/4 time. The score consists of three staves. The first staff contains the first two measures, followed by a first ending bracket (1.) and a second ending bracket (2.). The second and third staves continue the melody, with a triplet of eighth notes marked with a '3' in the second measure of each staff.

352. Billy Brocker

From the Bothy Band

Musical score for 'Billy Brocker' in G major, 2/4 time. The score consists of two staves. The first staff contains the first two measures, followed by a first ending bracket (1.) and a second ending bracket (2.). The second staff continues the melody, with a triplet of eighth notes marked with a '3' in the second measure.

353. The Merry Harriers

From A. McGann

Musical score for 'The Merry Harriers' in G major, 2/4 time. The score consists of three staves. The first staff contains the first two measures, followed by a triplet of eighth notes marked with a '3'. The second staff continues the melody, with a triplet of eighth notes marked with a '3'. The third staff contains the final two measures, with a triplet of eighth notes marked with a '3' and a double bar line.

Variations: I 1, 5

354. Rolling in the Barrel
Tap the Barrel

From P. Canny & P.J. Hayes

Musical score for 'Rolling in the Barrel' in G major, 2/4 time. It consists of three staves of music. The first staff contains the main melody. The second and third staves provide accompaniment, featuring triplet patterns and various rhythmic figures.

355. The Steeplechase
Good Morning to Your Nightcap

Musical score for 'The Steeplechase' in G major, 2/4 time. It consists of four staves. The first two staves are the main melody. The third staff is labeled 'Variations: I 2'. The fourth staff contains variations labeled 'II 1, 3, 5' and 'I 7', with triplet markings.

356. The Hilltop
Boys on the Hilltop

From J. F. Vesey

Musical score for 'The Hilltop' in G major, 2/4 time. It consists of three staves. The first two staves are the main melody. The third staff is labeled 'Variation: I 3' and includes a triplet marking.

357. The Hare's Paw
Jim Kennedy's Favorite

From P. Haverty

Musical score for 'The Hare's Paw' in G major, 6/8 time. The score consists of three staves. The first staff contains the first line of music, ending with a triplet of eighth notes marked with a '3'. The second staff continues the melody, also featuring a triplet of eighth notes marked with a '3'. The third staff concludes the piece with another triplet of eighth notes marked with a '3'.

358. Connemara Stockings
Winter Apples

From the Kilfenora Ceili Band

Musical score for 'Connemara Stockings' in G major, 6/8 time. The score consists of three staves. The first staff contains the first line of music. The second staff continues the melody. The third staff concludes the piece.

359. The Liffey Banks

From the Kilfenora Ceili Band

Musical score for 'The Liffey Banks' in G major, 6/8 time. The score consists of three staves. The first staff contains the first line of music. The second staff continues the melody, featuring two triplet markings over eighth notes, each marked with a '3'. The third staff concludes the piece with a triplet of eighth notes marked with a '3'.

360. Scotch Sally
Sporting Nell

From M. O'Brien

Musical score for Scotch Sally, Sporting Nell. The score is written in treble clef with a key signature of one sharp (F#) and a common time signature (C). It consists of three staves. The first staff contains the main melody with two first endings, labeled '1.' and '2.'. The second staff contains a rhythmic accompaniment. The third staff contains variations, labeled 'Variations: I 1,3', with a repeat sign and a fermata.

361. Scotch Mary
Irish Molly

Musical score for Scotch Mary, Irish Molly. The score is written in treble clef with a key signature of one sharp (F#) and a common time signature (C). It consists of three staves. The first staff contains the main melody. The second staff contains a rhythmic accompaniment. The third staff contains variations, labeled 'Variations: II 2, 5' and 'II 7', with a repeat sign and a fermata. There are also triplets and a '7' marking in the variations.

362. The Boys of Ballyconnell
The Humors of Ballyconnell

Musical score for The Boys of Ballyconnell, The Humors of Ballyconnell. The score is written in treble clef with a key signature of one sharp (F#) and a common time signature (C). It consists of three staves. The first staff contains the main melody with a '7' marking. The second staff contains a rhythmic accompaniment with triplets. The third staff contains variations, labeled 'Variations: II 1-4', with a repeat sign and a fermata. There is also a triplet marking in the variations.

363. The Yellow Tinker

From J. O'Brien-Moran

Musical score for 'The Yellow Tinker' in G major, 2/4 time. The score consists of five staves of music. The first four staves contain the main melody with various triplet markings. The fifth staff is labeled 'Variations: II 5,6' and includes a double bar line, a rest, and a triplet.

364. Boys of the Lough

From M. Molloy

Musical score for 'Boys of the Lough' in G major, 2/4 time. The score consists of four staves of music. The first three staves contain the main melody with various triplet markings. The fourth staff is labeled 'Variation: I 1, 2:' and includes a triplet and a double bar line.

365. The Morning Dew

From W. Clancy

Musical notation for 'The Morning Dew' in G major, 4/4 time. It consists of three staves of music. The first staff contains the first eight measures, ending with a repeat sign. The second staff continues with measures 9-16, including a triplet of eighth notes in measure 15. The third staff contains measures 17-24, ending with a final double bar line.

Variations: I 5,6

II 1,3,5

III 8

Musical notation for variations of 'The Morning Dew' in G major, 4/4 time. It consists of a single staff with three measures of music. The first measure is a whole rest. The second measure contains a triplet of eighth notes. The third measure contains a triplet of eighth notes. The staff ends with a final double bar line.

366. The Chicago Reel The Portlaw Reel

Musical notation for 'The Chicago Reel' and 'The Portlaw Reel' in G major, 4/4 time. It consists of three staves of music. The first staff contains the first eight measures. The second staff continues with measures 9-16. The third staff contains measures 17-24, ending with a final double bar line.

367. Barrack Street

From M. Nolan

Musical notation for 'Barrack Street' in G major, 3/4 time. It consists of three staves of music. The first staff contains the first eight measures, with time signatures changing from 3/4 to 5/4 and back to 3/4. The second staff continues with measures 9-16, including a triplet of eighth notes in measure 15. The third staff contains measures 17-24, ending with a final double bar line.

368. Nellie Donovan
The Bonny Bunch of Ferns

From R. Hannan & P. Glackin

Musical score for 'Nellie Donovan' in G major, 2/4 time. It consists of three staves of music. The first staff begins with a treble clef, a key signature of one sharp (F#), and a common time signature (C). The melody is characterized by eighth and sixteenth notes, with some rests. The second and third staves continue the melody, with the third staff ending with a double bar line.

369. The Old Wheels of the World

From Planxty

Musical score for 'The Old Wheels of the World' in G major, 2/4 time. It consists of two staves. The first staff has a treble clef, a key signature of one sharp (F#), and a common time signature (C). It features a first ending (marked '1.') and a second ending (marked '2.'). The second staff continues the melody and includes a triplet of eighth notes (marked '3') near the end.

370. Lady Carbury
The Mason's Apron

From S. Ennis

Musical score for 'Lady Carbury' in G major, 2/4 time. It consists of five staves. The first staff has a treble clef, a key signature of one sharp (F#), and a common time signature (C). The score includes several triplets (marked '3') and first/second endings (marked '1.' and '2.'). The melody is primarily composed of eighth and sixteenth notes, with some accents (^) and slurs.

371. Peter Street
Timur the Tartar

From C., G. & S. McKeon

Musical score for 'Peter Street' in G major, 2/4 time. The score consists of three staves. The first staff begins with a treble clef and a key signature of one sharp (F#). It contains several triplet markings (indicated by a '3' above the notes) and a repeat sign with first and second endings. The second staff continues the melody with more triplet markings. The third staff concludes the piece with a repeat sign and two endings, labeled '1.' and '2.', with a fermata over the final note of the first ending.

372. Bean an ti ar Lar
Mistress of the House

Musical score for 'Bean an ti ar Lar' in G major, 2/4 time. The score consists of three staves. The first staff begins with a treble clef and a key signature of one sharp (F#). The melody is characterized by a steady eighth-note pattern. The second staff continues the melody with a repeat sign. The third staff concludes the piece with a repeat sign and a fermata over the final note.

373. Mistress of the House
Woman of the House; Bean Ti Ar Lar

From D. Delaney

Musical score for 'Mistress of the House' in G major, 2/4 time. The score consists of three staves. The first staff begins with a treble clef and a key signature of one sharp (F#). It features several triplet markings (indicated by a '3' above the notes). The second staff continues the melody with a repeat sign and a first ending marked '1.'. The third staff concludes the piece with a second ending marked '2.' and a fermata over the final note.

374. Ceo na gCnoc

From J. O'Brien-Moran

Musical score for 'Ceo na gCnoc' in G major, 6/8 time. The score consists of three staves. The first staff begins with a treble clef, a key signature of one sharp (F#), and a common time signature (C). The melody starts with a triplet of eighth notes. The second staff continues the melody. The third staff is labeled 'Variations: I 2' and 'II 7', with a triplet of eighth notes at the end.

375. Peeler's Jacket
Flannel Jacket

From S. Ennis

Musical score for 'Peeler's Jacket' in G major, 6/8 time. The score consists of four staves. The first staff begins with a treble clef, a key signature of one sharp (F#), and a common time signature (C). The melody is simple and rhythmic. The second staff has a first ending bracket labeled '1.'. The third staff has a second ending bracket labeled '2.' and a triplet of eighth notes. The fourth staff concludes the piece with a double bar line and repeat dots.

376. An Gliomach

From G. McKeon

Musical score for 'An Gliomach' in G major, 6/8 time. The score consists of three staves. The first staff begins with a treble clef, a key signature of one sharp (F#), and a common time signature (C). The melody features several triplet markings. The second staff continues the melody with more triplet markings. The third staff concludes the piece with a double bar line and repeat dots.

377. The Donegal Reel

From R.L. O'Meally

Musical score for 'The Donegal Reel' by R.L. O'Meally. The score is written in G major (one sharp) and 2/4 time. It consists of four staves. The first staff contains the melody, which includes several triplet markings (indicated by a '3' above a group of notes). The second and third staves provide a harmonic accompaniment, also featuring triplet markings. The fourth staff continues the accompaniment. The piece concludes with a repeat sign.

378. Swinging on the Gate

From T. Keane & J. McCarthy

Musical score for 'Swinging on the Gate' by T. Keane & J. McCarthy. The score is written in G major (one sharp) and 2/4 time. It consists of three staves. The first staff contains the melody. The second and third staves provide a harmonic accompaniment. The piece concludes with a repeat sign.

379. The Repeal of the Union

From T. Keane & J. McCarthy

Musical score for 'The Repeal of the Union' by T. Keane & J. McCarthy. The score is written in G major (one sharp) and 2/4 time. It consists of two staves. The first staff contains the melody, which includes a repeat sign. The second staff provides a harmonic accompaniment.

380. The Jolly Tinker

Musical score for 'The Jolly Tinker' (380) in G major, 2/4 time. The score consists of five staves of music. The first staff begins with a treble clef and a key signature of one sharp (F#). The melody is written in a single line. The second staff contains a triplet of eighth notes. The third staff continues the melody. The fourth staff features a triplet of eighth notes. The fifth staff includes first and second endings, indicated by '1.' and '2.' above the staff lines. The piece concludes with a double bar line.

381. The Jolly Tinker (Hannan)

From R. Hannan

Musical score for 'The Jolly Tinker (Hannan)' (381) in G major, 2/4 time. The score consists of seven staves of music. The first staff begins with a treble clef and a key signature of one sharp (F#). The melody is written in a single line. The second staff contains a triplet of eighth notes. The third staff continues the melody. The fourth staff features a triplet of eighth notes. The fifth staff contains a triplet of eighth notes. The sixth staff contains a triplet of eighth notes. The seventh staff contains a triplet of eighth notes. The piece concludes with a double bar line.

382. Dan McCarthy's Fancy

From L. Walsh

Musical score for 'Dan McCarthy's Fancy' in G major, 2/4 time. The score consists of three staves. The first staff begins with a treble clef, a key signature of one sharp (F#), and a common time signature (C). It features a series of eighth notes with triplets marked '3' and a first ending bracket labeled '1.' at the end. The second and third staves continue the melody with similar triplet patterns and eighth-note runs.

383. The Glen Road to Carrick

From G. McKeon

Musical score for 'The Glen Road to Carrick' in G major, 2/4 time. The score consists of eight staves. It begins with a treble clef, a key signature of one sharp (F#), and a common time signature (C). The melody is primarily composed of eighth notes, often beamed in pairs or groups. There are several triplet markings ('3') throughout the piece, and a first ending bracket is visible in the sixth staff. The piece concludes with a double bar line.

384. The Honeymoon

From M. O'Brien

Musical score for 'The Honeymoon' in G major, 2/4 time. It consists of three staves of music. The first two staves contain the main melody, and the third staff is labeled 'Variant: II,3' and shows an alternative ending. The piece concludes with a double bar line.

385. McKenna's #1

Colonel McRory; Coirneal Mhac Ruaidhri; Colonel Rogers

From L. O'Flynn

Musical score for 'McKenna's #1' in G major, 2/4 time. It consists of three staves of music. The second staff includes first and second endings, indicated by '1.' and '2.' above the notes. The piece concludes with a double bar line.

386. McKenna's #2

The Happy Days of Youth

From L. O'Flynn

Musical score for 'McKenna's #2' in G major, 2/4 time. It consists of three staves of music. The second and third staves feature triplets, indicated by a '3' below the notes. The piece concludes with a double bar line.

387. Bonny Anne

From L. O'Flynn

Daniel Down, ca 1760

Musical score for 'Bonny Anne' in G major, 3/4 time. The score consists of four staves of music. The first staff begins with a treble clef, a key signature of one sharp (F#), and a common time signature (C). The melody is characterized by eighth-note patterns and includes two triplet markings (indicated by a '3' above the notes). The piece concludes with a double bar line.

388. The Green Fields of Rossbeigh
The Kerry Reel

From P. Mitchell

Musical score for 'The Green Fields of Rossbeigh' in G major, 3/4 time. The score consists of five staves of music. The first staff begins with a treble clef, a key signature of one sharp (F#), and a common time signature (C). The melody is characterized by eighth-note patterns and includes several triplet markings (indicated by a '3' above the notes). The piece concludes with a double bar line.

389. The Musical Priest

Musical score for 'The Musical Priest' in G major, 2/4 time. The score consists of three staves. The first staff contains the main melody. The second and third staves provide accompaniment. The second staff includes a triplet of eighth notes and first/second endings. The third staff includes first and second endings.

390. The Musical Priest (Hannan)

From R. Hannan

Musical score for 'The Musical Priest (Hannan)' in G major, 2/4 time. The score consists of seven staves. The first six staves contain the main melody and accompaniment. The seventh staff is labeled 'variants II 6' and 'III 5' and includes a triplet of eighth notes. The score is in G major and 2/4 time.

391. The Bunch of Keys

From S. Ennis

Variation: I 1,2 Low G's played on the bass reg with the chanter tip

392. The Cameronian

From M. O'Brien