

449. The Ballydesmond Polka #1

Tony Lowe's

From D. Murphy & J. Clifford

Musical notation for 449. The Ballydesmond Polka #1, Tony Lowe's. The piece is in 2/4 time with a key signature of one sharp (F#). It consists of four staves of music. The first staff begins with a treble clef, a sharp sign, and a 2/4 time signature. The melody is written in a single line. The second staff contains a repeat sign. The third and fourth staves continue the melody. The piece ends with a double bar line and repeat dots.

450. The Ballydesmond Polka #2

Maurice Manley's

From D. Murphy & J. Clifford

Musical notation for 450. The Ballydesmond Polka #2, Maurice Manley's. The piece is in 2/4 time with a key signature of one sharp (F#). It consists of three staves of music. The first staff begins with a treble clef, a sharp sign, and a 2/4 time signature. The melody is written in a single line. The second staff contains a repeat sign. The third staff continues the melody and ends with a double bar line and repeat dots.

451. The Ballydesmond Polka #3

Tom Billy's

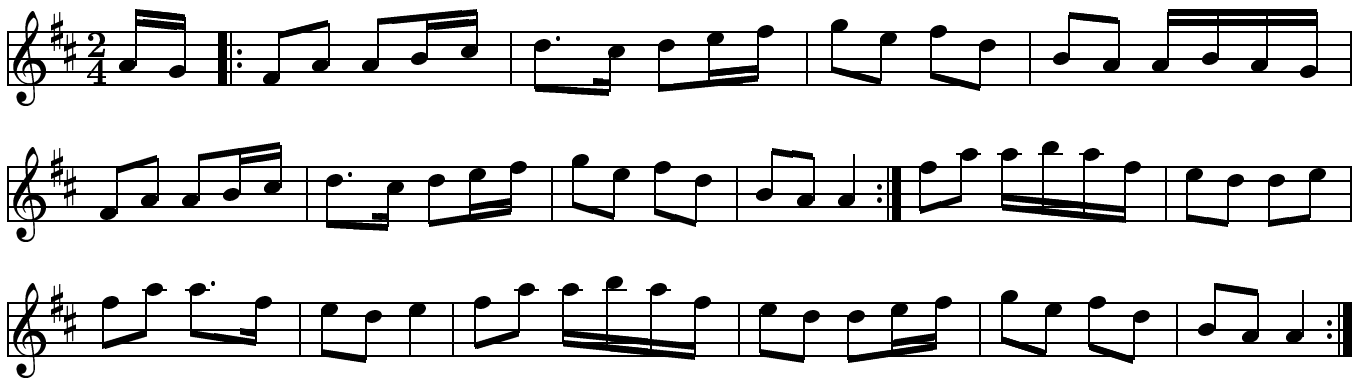
From D. Murphy & J. Clifford

Musical notation for 451. The Ballydesmond Polka #3, Tom Billy's. The piece is in 2/4 time with a key signature of one sharp (F#). It consists of three staves of music. The first staff begins with a treble clef, a sharp sign, and a 2/4 time signature. The melody is written in a single line. The second staff contains a repeat sign. The third staff continues the melody and ends with a double bar line and repeat dots.

452. Peggy Lettermore



453. Spanish Lady



454. Maggie in the Woods



455. Denis Murphy's Polka



Musical notation for Denis Murphy's Polka, consisting of three staves in treble clef, 2/4 time, and D major. The melody is characterized by eighth-note patterns and a repeat sign at the end of the second staff.

456. The Dark Girl

From D. Murphy & J. Clifford



Musical notation for The Dark Girl, consisting of three staves in treble clef, 2/4 time, and D major. The melody features a mix of eighth and sixteenth notes, with a repeat sign at the end of the second staff.

457. Farewell to Whiskey

From D. Murphy & J. Clifford



Musical notation for Farewell to Whiskey, consisting of three staves in treble clef, 2/4 time, and D major. The melody is primarily composed of eighth notes, with a repeat sign at the end of the second staff.

458. Tommy Reck's

From T. Reck

Musical notation for 'Tommy Reck's' in 4/4 time, D major. The piece consists of three staves of music. The first staff contains the first four measures. The second staff contains the next four measures, ending with a repeat sign. The third staff contains the final four measures, ending with a repeat sign and a fermata.

459. Portlairge
The Rose Tree

Musical notation for 'Portlairge' in 2/4 time, D major. The piece consists of three staves of music. The first staff contains the first four measures. The second staff contains the next four measures, ending with a repeat sign. The third staff contains the final four measures, ending with a repeat sign and a fermata.

460. The Forty-Two Pound Cheque

From Planxty

Musical notation for 'The Forty-Two Pound Cheque' in 2/4 time, D major. The piece consists of three staves of music. The first staff contains the first four measures. The second staff contains the next four measures, ending with a repeat sign. The third staff contains the final four measures, ending with a repeat sign and a fermata.

461. Austin Kelly's Set

From T. Standeven

Musical score for 'Austin Kelly's Set' in G major, 2/4 time. The score consists of three staves. The first staff contains the first line of music. The second staff contains the second line, including a first ending bracket labeled '1.' over the final two measures. The third staff contains the third line, including a second ending bracket labeled '2.' over the first two measures of the line.

462. The Newmarket Polka
Jimmy Doyle's Favorite

From D. Brooks

Musical score for 'The Newmarket Polka' in G major, 2/4 time. The score consists of three staves. The first staff contains the first line of music. The second staff contains the second line, including a repeat sign and a first ending bracket. The third staff contains the third line, including a second ending bracket.

463. The Newmarket Polka #2
The Sword of Columcille

Musical score for 'The Newmarket Polka #2' in G major, 2/4 time. The score consists of three staves. The first staff contains the first line of music. The second staff contains the second line, including a repeat sign and a first ending bracket. The third staff contains the third line, including a second ending bracket.

464. The Newmarket Polka #3

Musical score for 'The Newmarket Polka #3' in G major (one sharp) and 2/4 time. The score consists of three staves of music. The first staff begins with a treble clef, a key signature of one sharp (F#), and a 2/4 time signature. The melody is composed of eighth and sixteenth notes, with a repeat sign at the end. The second and third staves continue the melody with similar rhythmic patterns and a final repeat sign.

465. The Coolai Polka

From M. Brunner

Musical score for 'The Coolai Polka' in G major (one sharp) and 2/4 time. The score consists of three staves of music. The first staff begins with a treble clef, a key signature of one sharp (F#), and a 2/4 time signature. The melody is composed of eighth and sixteenth notes, with a repeat sign at the end. The second and third staves continue the melody with similar rhythmic patterns and a final repeat sign.

466. Mrs Crowley's

From M. Brunner

Musical score for 'Mrs Crowley's' in G major (one sharp) and 2/4 time. The score consists of three staves of music. The first staff begins with a treble clef, a key signature of one sharp (F#), and a 2/4 time signature. The melody is composed of eighth and sixteenth notes, with a repeat sign at the end. The second and third staves continue the melody with similar rhythmic patterns and a final repeat sign.

467. The Last Chance

From D. Russ

Musical notation for 'The Last Chance' in 2/4 time, key of D major. The piece consists of three staves of music. The first staff begins with a treble clef, a key signature of one sharp (F#), and a 2/4 time signature. The melody is composed of eighth and sixteenth notes, with some dotted rhythms. The second and third staves continue the melody, ending with a double bar line and repeat dots.

468. Bill Sullivan's
Knocnagaree

Musical notation for 'Bill Sullivan's Knocnagaree' in 2/4 time, key of D major. The piece consists of two staves of music. The first staff begins with a treble clef, a key signature of two sharps (F# and C#), and a 2/4 time signature. The melody is composed of eighth and sixteenth notes. The second staff continues the melody, ending with a double bar line and repeat dots.

469. The Siege of Ennis
The Corkonian Polka; Banks of Inverness

From Tulla Ceili Band

Musical notation for 'The Siege of Ennis' in 2/4 time, key of D major. The piece consists of five staves of music. The first staff begins with a treble clef, a key signature of one sharp (F#), and a 2/4 time signature. The melody is composed of eighth and sixteenth notes, with some dotted rhythms. The second and third staves continue the melody. The fourth and fifth staves continue the melody, ending with a double bar line and repeat dots.

470. The Munster Bank

Musical notation for 'The Munster Bank' in 2/4 time, G major. The piece consists of three staves of music. The first staff contains the first eight measures. The second staff contains the next eight measures, including a repeat sign at the beginning of the second half. The third staff contains the final eight measures, ending with a double bar line and repeat dots.

471. The Haydon Fancy

From the Tulla Ceili Band

Musical notation for 'The Haydon Fancy' in 2/4 time, G major. The piece consists of three staves of music. The first staff contains the first eight measures. The second staff contains the next eight measures, including a repeat sign at the beginning of the second half. The third staff contains the final eight measures, ending with a double bar line and repeat dots.